



Premium Biostimulator | PLLA with PN



**PLLA**

Poly-L-Lactic Acid



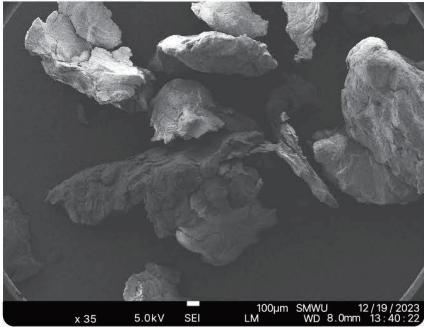
**PN**

PolyNucleotide

PiNkLLA

# Technical Features

## PLLA Manufacturing technology



Conventional PLLA



PiNkLLA

- The PLLA particle is formed into a spherical shape, reducing the nodules and inflammatory response.
- The PLLA particle size is uniform sized within the range of 30 to 50µm.

## Storage platform technology



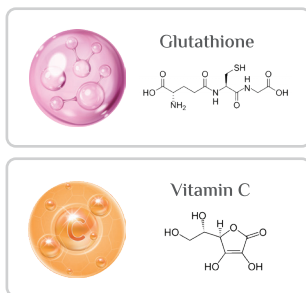
It protect functional materials during the manufacturing and distribution process and exhibits long lasting results when used.

### Before administration

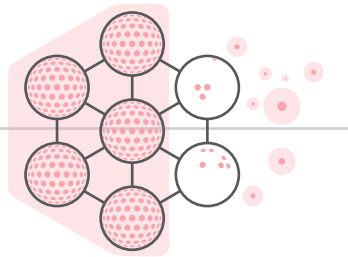
During sterilization/distribution/administration  
Protects functional materials

### After administration

Over an intended period of time,  
Slowly releases a fixed amount of functional materials



Supported functional Materials



Dissolved and absorbed into the body

Expresses functional effects



It is widely used as a raw material for medical devices and cosmetics due to its antioxidative, whitening, and wrinkle-improving effects, but it has low stability and easily loses its function.

The CIB Technology structure supports functional materials to protect them from degradation before administration and induces their functional expression after administration.

※CIB Technology= Complexed In Ball Technology

## Instant Hydration technology



Add 4mL for injection  
(Saline or distilled water)

Shake 1 minute



shake the vial by hand  
for just 1 minute to ensure  
the contents are fully dissolved.



Ready to use!

## BEFORE & AFTER

	BEFORE	AFTER	
A			<p><b>Fine Wrinkles and Pigmentation Improvement</b></p> <p>Skin Type : Deep wrinkles, A lot of pigmentation (Syringoma, Freckles)</p>
B			<p><b>Whitening and Redness Improvement</b></p> <p>Skin Type : Redness, Large pores, Severely uneven skin texture</p>
C			<p><b>Pigmentation and Elasticity Improvement Acne Reduction and Scar Improvement</b></p> <p>Skin Type : Freckle, Acne hyperpigmentation Adultacne, Redness</p>

## Active Ingredients

PLLA, a lactic acid polymer, promotes collagen formation in pores, and Dead skin cells are naturally exfoliated as PLLA particles expand.

### PiNkLLA



**PLLA (Poly-L-Lactic Acid)**  
Stimulation of collagen production, wrinkle improvement

- A lactic acid polymer
- Safe as it decomposes into water, carbon dioxide, etc. after functional expression.



**PN (Polynucleotide)**  
Cell regeneration

- A DNA polymer mixture extracted from the salmon sperm or testes.
- Safe and minimize side effects since it is similar to human-derived DNA.



**Vitamin C (Ethyl Ascorbyl Ether)**  
Whitening

- Prevents aging by blocking free radical access. To maintain functional efficacy,
- CIB Technology is applied to maintain the functional effects.



**Glutathione**  
Whitening

- Inhibits melanin formation through the antioxidant activity.
- CIB Technology is applied to maintain the functional effects.

※The effects described above are limited to the characteristics of raw materials.

※CIB Technology= Complexed In Ball Technology

NEW ADVANCED BIO REGENERATOR

# PiNkLLA

PLLA with PN

Why PiNkLLA?

Combination



PLLA



PN

Micro Sphere Shape



Dilution



Just 1 min



Copyright (c) 2024 Oreon Life Science Co., Ltd. Copying or storing any content except as provided above is expressly prohibited without prior written permission of the copyright holder.

[WWW.MEDICALS-COSMETICS.COM](http://WWW.MEDICALS-COSMETICS.COM) / HU / AT

MC  
MEDICALS  
COSMETICS

oreon  
LIFE SCIENCE